

U1 Floor is  
Your Number 1  
Preferred *Choice*

We specialize in all varieties of Vinyl, Re-Mastered Engineered Timber, Solid Timber and External Decking.

FLOORING  
*Catalog*

2022  
Collection

**U1 FLOOR PTE LTD**

📍 6 Gambas way #02-07/08  
Ascent@ Gambas Spore 756939.

☎ +65 6208 0135 / +65 6208 0136

📠 +65 6208 0137

🌐 [www.u1floor.com](http://www.u1floor.com)

✉ [enquiries@u1floor.com](mailto:enquiries@u1floor.com)



## ABOUT US

**U1 FLOOR PTE LTD** was established in 2015 and has been in business for over 7 years. We are the sole distributor of Floover Switzerland Vinyl and other established brands in Vinyl and Decking as well as Re-Mastered Engineered Timber. Our latest product this year is our Self-Sanitising Nano Smart Floor.

U1 Floor Pte Ltd specialises in both commercial and residential projects.

Some of the projects that we have undertaken are Cartier Headquarters, EFG International Bank, Lee & Lee Law Firm, Foodpanda Headquarters, Bank of Singapore, UBS, NTUC, Tiger Beer Headquarters, Heineken Headquarters, and Changi Airport Group. We have our own dedicated team of installers that are highly experienced with more than 20 years of experience in the industry.

Because of this we meet our needs to our customers and cater highly skilled finishing work that pleases our end-users. Our aim is not only to beautify homes but to ensure safety as well as enjoying a more resilient and bacteria free environment for our end users.

## CONTENT TABLE

OUR FLOORING	PAGE 04
FLORNANO (SELF-SANITIZING VINYL)	PAGE 06
JAPAN SERIES	PAGE 11
FLOOVER	PAGE 14
WOVEN VINYL	PAGE 18
LUXURY RESILIENT VINYL FLOOR	PAGE 23
RE-MASTERED ENGINEERED TIMBER (RMET)	PAGE 26
EXTERIOR WOOD DECKING	PAGE 30





**CRAWFURD  
HOSPITAL**  
Flornano  
FLL9922 Butter Oak



**FOOD  
PANDA HQ**  
RMET Pre-Finished Oak



**ASCENDAS  
SINGBRIDGE**  
LL1055 Cream Pine &  
LL1066 Scottish Oak

## OUR FLOORING

U1 Floor Pte Ltd offers high-quality and versatile vinyl tiles to meet the needs of all of our customers. As seen on the left, our product showcase includes Floover, Re-Mastered Engineered Timber (RMET), and Flornano. Our customer can rest assured that our vinyl is easy to clean, minimum maintenance and hassle free installation. It is a non-porous product and has the wear layer of 0.55mm thickness, making it one of the thickest wear layer offered. It is scratch-resistant, and our slip resistance is R10, which is the highest in the industry, making it durable and excellent for both residential and commercial usage.

Up till today, our clients have been utmost satisfied with our products and efficiency of our company. U1 Floor Pte Ltd assures you that our work and product quality has always been designed and made for the best.

2019-2022  
Showcase

Flornano Singapore is an environmentally conscious company that strives to deliver the best possible service to its consumers.

Flornano is a product that is close to natural ecology and is largely based on nature and modern technology and science to improve the quality of one's life. U1 Floor Pte Ltd collaboration with European and Asian cross-border technological research & development professionals to produce superior innovative construction materials that are safe, practical, aesthetically pleasing, environmentally friendly and has a small carbon footprint.

Flornano has pledged to uphold values such as sustainable development, resource conservation, and to producing a healthier environment for all. Flornano's innovative momentum is committed to providing new experiences with trading partners and consumers, as well as addressing the ever-growing market demand.

The primary principles of Flornano are prioritizing on comfort, being natural, and on one's personal aesthetics. These ideas are intertwined to reflect the cohabitation of humanity and nature. U1 Floor Pte Ltd specializes in high-quality, custom-made solutions for offices, hotels, educational institutions, medical institutions, shopping malls, fitness and sports facilities, airports, and residential areas, impressing clients with Flornano flooring's outstanding quality.

## FINDING THE BEST SOLUTION *From Nature*



### Surface Energy System

Atmospheric circulation is one of the most essential factors for life on Earth to function normally, because it provides a balanced and healthy climate for all.



### Harnessing Earth's Natural Resources

As clean air rises and polluted air falls. Solar power is required for purification of air on the planet's surface, which is accomplished by harnessing earth's natural processes such as photocatalysis.



### Forest Ecosystem

Photosynthesis consumes a lot of carbon dioxide and releases a lot of oxygen in forests. Therefore, maintaining the ecological integrity and quality of air requires hierarchical and efficient cooperation.



### Personal Spaces

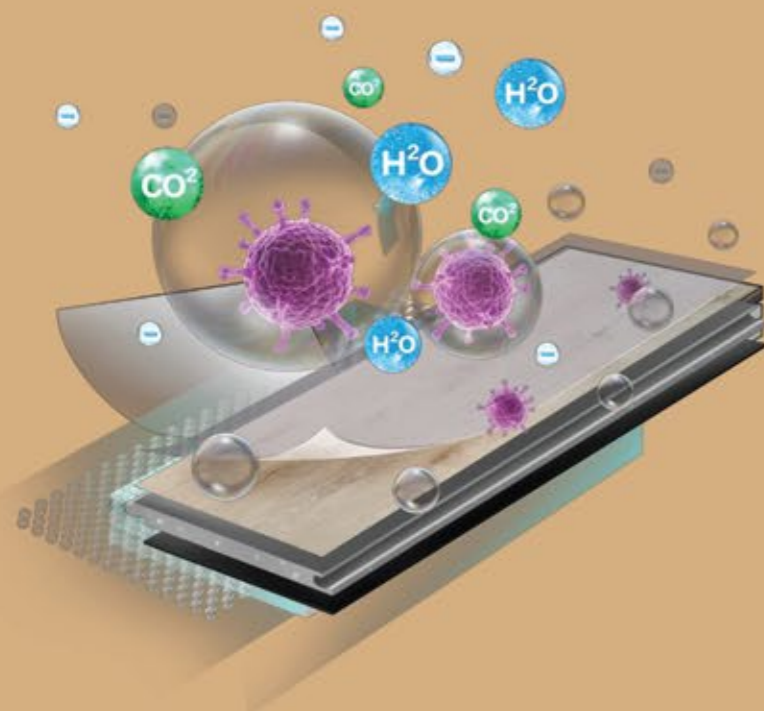
In modern society, human beings spend more than 20 hours every day indoors. Therefore, an architect's first concern is to figure out how to create a healthy indoor environment that are not affected by harsh natural climates, providing us with shelter and comfort.



### Meeting Societal Needs

After developing our own self-sanitizing technology and incorporating it into our flooring, U1 Floor Pte Ltd is able to provide for health and happiness of our customers whilst also being accessible, safe, and sustainable.

# HOW <sup>FL</sup> FLORNANO WORKS



- Sunlight or a light sources is required
- To Energize TIO2 Nano-Particles on floorboard surface
- Highly reactive TIO2 electrons will aggressively react with pollutants (Germs, Bacteria, VOC)
- Pollutants are successfully oxidised (burned)
- Pollutants are broken down into water and carbon dioxide, making the indoor air cleaner and healthier

## TECHNICAL DATA

<sup>FL</sup> FLORNANO



Kill Germs



Purifying VOC



Easy Cleaning



Deodorising Effect



Long-Term Effect



Easy Installation



Ecological



Abrasion Resistance



Impact Resistant



Silent



UV Ray Resistant



Fire Resistance



Antistatic



Resistant To Chemicals

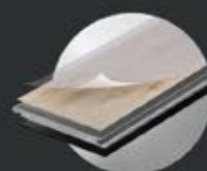
## PRODUCT LINES



GLUE DOWN



ENGINEERED DELUXE VINYL



SPC HARD LOCK



LOOSE LAY ANTISKID



ROLLS



HYBRID ENGINEERED AQUA

CHARACTERISTICS	TEST	LUXURY VINYL SERIES
Classification	EN685	21-44
Dimensions	ISO 24341	220 x 1220mm
Straightness / Squareness	ISO 24342	≤ 0.25mm
Thickness	ISO 24346	5mm ± 0.15mm
Wear Layer Thickness	ISO 24340	0.55mm (+ 13% / -10%)
Weight	EN430	9.3kg/m <sup>2</sup>
Abrasion Resistance	EN660: part-1	Group T: ≤0.08mm
Residual Indentation	ISO 24343-1	≤ 0.10mm
Chemical Resistance	EN438	Grade 5
Fire Resistance	EN13501 / ISO9239-1	Class B <sub>s</sub> S <sub>1</sub> (B1)
Dimensional Stability	ISO 23999	≤ 0.12%
Color Fastness	ISO 105-B02:1994	≥ Grade 6
Slip Resistance	AS4586 / DIN 51130	R10
Formaldehyde Emissions	EN717-1	E1
Curving	ISO 23999	≤ 1.2mm
Peel Resistance	ISO 24345	≥ 75N/5cm
Click Force	ISO 24334	≥ 120N/5cm
Anti-scratch	---	≥ 2500g
Acoustic Performance	EN ISO 717-2	Δ Lw=10 dB
Cigarette burn resistance	EN438-2	Class 3
Castor Chair	ISO 4918	After 25 000 cycles, no delamination shall occur. No disturbance to the surface other than a slight change in appearance.

# RECTANGULAR PLANKS

COLOR SELECTION

## MINI CLICK SERIES (110MM x 610MM x 5MM)



FLMC 8811  
SALT



FLMC 8822  
BIRRA OAK

## CLICK SERIES (220MM x 1220MM x 5MM)



FLC 8833  
WHITE CREPITO



FLC 8844  
BISCOTTI



FLC 8855  
O'CHA



FLC 8866  
CIGAR

## LOOSE LAY SERIES (228MM x 1220MM x 5MM)



FLL 9911  
WHISKY OAK



FLL 9922  
BUTTER OAK



Indoor natural  
ecosystem

# Japan HOME SERIES



ウイルスの99.98%を排除する  
安心、安全、家庭での使用に適しています

# TECHNICAL DATA



# RECTANGULAR PLANKS

COLOR SELECTION

CHARACTERISTICS	TEST	HYBRID HARD LOCK SERIES
Thickness	---	6-6.5mm
Density	---	1.95-1.97g/cm <sup>3</sup>
Wear Layer	---	0.3/0.55mm
Dimensional Stability	ISO23999:2008	X Direction: 0.06% , Y Direction: 0.05%
Curling	ISO23999:2008	≤1.0mm
Residual Indentation	ISO24343-1:2007	~0.01mm
Light Stability	ISO105-B02:Method 3	≥6
Castor Chair	EN 425	Typ W
Classification	EN ISO 10582	23, 31/33, 42
Reaction to Fire	EN13501-1	Bfl-S1
Slip Resistance	DIN 51130 EN 13893	R10 DS
Wear Resistance	EN660-2	Group T
Thermal Resistance	EN122667:2001	0.038m <sup>2</sup> K/W
Determination of Resistance to Stains Chemical Resistance	ISO26987:2008	Resistant
Squareness	ISO24342:2007	Deviation range: X Direction: 0.00mm~+0.05mm Y Direction: 0.00mm~+0.05mm
Straightness	ISO24342:2007	Deviation range: X Direction: 0.00mm~+0.03mm Y Direction: 0.00mm~+0.05mm
Peel Resistance	ISO24345:2006	X Direction: 65N/50mm, Y Direction: 65N/50mm
Burning Cigarette Test	EN1399:1997 Method B	Rating 3: Moderate Change of Gloss and Moderate Brown Stain.
Utilization	---	Recyclable

CLICK / FLOATING SYSTEM  
(220MM X 1220MM X 6/6.5MM)  
IXPE Foam Backing



HSC 6661  
YUKI



HSC 6662  
GURE



HSC 6663  
BIRAOKU



HSC 6664  
BINTEJI



HSC 6665  
ROIZU



HSC 6666  
TIFFANY GURE



# FLOOVER

Flover offers products for both residential and commercial usage whilst continually incorporating new technologies and developing market-driven solutions. The wide range of styles allows the user to incorporate the vinyl in any space, including bathrooms or terraces.

Flover's Loose Lay Vinyl has four layers. Its top layer is made of a durable, translucent PVC, which then conforms to the elasticity of the vinyl underneath perfectly, making it comfortable to walk on. The third layer is comprised entirely of PVC and fibreglass, providing excellent comfort and stability. Finally, the last layer of the vinyl includes a distinctive antiskid underlayment that greatly improves the performance of Floover's vinyl.



SINGAPORE  
SCIENCE  
PARK

LL1055 Cream Pine  
LL1066 Scottish Oak



1. Transparent PVC layer of 0.5mm
2. Printed décor film
3. Core layer of PVC reinforced with fibreglass
4. PVC backing with micro-antiskid

## TECHNICAL DATA



Microbevel 4 sides

Suction pad system  
ANTISKID underlayment



Slip  
Resistant



Fire  
Resistant



Ecological



Antistatic



Silent



UV Ray  
Resistant



Abrasion  
Resistant



Chemical  
Resistant



Impact  
Resistant



Waterproof

CHARACTERISTICS	TEST	LOOSE LAY ANTISKID
Classification	EN 16511	23/33
Dimensions	EN 427	1220 m x 228 mm
Thickness	EN 430	5 mm
Weight	EN 430	9.95 kg/m <sup>2</sup>
Abrasion Resistance	EN 660-2:99	≥ 0.015 gr / 1000r
Chemical Resistance	EN 438	Class 0
Fire Resistance	EN 13501-1	Class BFLs1 (B1)
Dimensional Stability	EN 434	-0.12%
Curving	EN 434	0.5 mm
Acoustic Certification	EN ISO 717-2	ΔLw = 15dB
Cigarette Burn Resistance	EN 438-2	Class 3
Flexibility	EN 435	20 mm
Slip/Slide Resistance	EN 13893	DS Grade
Formaldehyde Emission	ISO 717	E1
UV Resistace	EN 105	≥ Grade 6
Castor Chair	EN 425	Suitable for type W
Antistatic Performance	EN 1815	< 2 kv
Residual Indentaion	EN 433	max 0.10 mm
Water Resistace	EN 317	0% Swelling

# RECTANGULAR PLANKS

COLOR SELECTION



## RECTANGULAR PLANKS

(228MM X 1220MM X 5MM / 4MM)



LL 1011  
CEMENT GREY



LL 1022  
MISTY GREY



LL 1033  
WINTER PINE



LL 1044  
GRAINY OAK



LL 1055  
CREAM PINE



LL 1066  
SCOTTISH OAK



LL 1077  
SOLID CONCRETE



LL 1088  
BELGIUM OAK



LL 1099  
OAK TREE



LL 4011  
UMBER OAK

## JUMBO SQUARE TILES

(914.4MM X 914.4MM X 4MM)



LL 5011  
PEARLY GREY



LL 5033  
D'ORO MARBLE



LL 5088  
CRYSTAL BLACK

## MINI LOOSE LAY

(Wear Layer 0.5mm)

(122MM X 610MM X 5MM)



MLL 6011  
ROYCE OAK



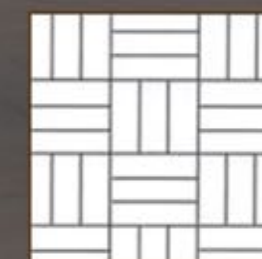
MLL 6022  
LAZIO OLIVE



BRICK  
PATTERN



DIAGONAL  
BASKET



SQUARE  
BASKET



SQUARE OR  
DIAGONAL  
HERRINGBONE



SINGLE  
HERRING-BONE



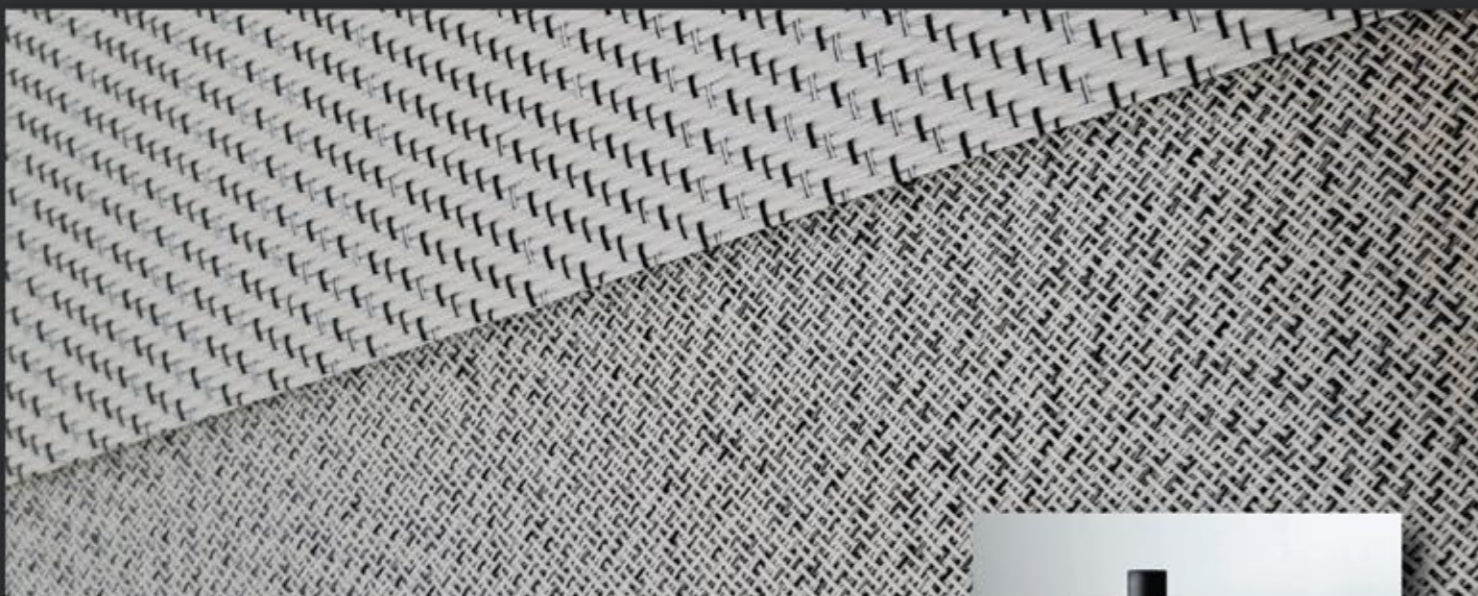
DOUBLE  
HERRING-BONE

# WOVEN VINYL

## The Advantages of

# Woven Vinyl

*Woven Vinyl by Floover* is an exclusive, appealing, and one-of-a-kind product. The material has a unique feel to it, aside from being a product that is largely inspired by nature, it also has all the advantages of vinyl – simple installation and having high wear resistance.



- DOES NOT RETAIN MITES AND BACTERIA
- EXTREMELY RESISTANT TO STAINS
- EASY TO CLEAN AND MAINTAIN
- CAN BE WASHED WITH SOAP AND WATER
- EXTREMELY HIGH NOISE REDUCTION

Roll Format



Tile Format



- 1 Woven Vinyl
- 2 Backing Vinyl

## TECHNICAL DATA

- 1 Woven Vinyl
- 2 PVC + FiberGlass + PVC



CHARACTERISTICS	TEST	GLUE DOWN ROLLS	GLUE DOWN TILES	LOOSE LAY
Classification	EN 685	23/33	23/33	23/33
Dimensions	EN 427	2 x 10mm	500 x 500mm	500 x 500mm
Thickness	EN 430	2.5 mm	3 mm	4.2 mm
Weight	EN 430	3.25 kg/m²	4 kg/m²	5.50 kg/m²
Abrasion Resistance	EN 660-1:99	0.068 mm	0.068 mm	0.068 mm
	EN 660-2:99	1.80 mm³	1.80 mm³	1.80 mm³
Chemical Resistance	EN 423	Class 0	Class 0	Class 0
Fire Resistance	EN 13501-1	Class BFLs (B1)	Class BFLs (B1)	Class BFLs (B1)
UV Testcase	ISO 105	> Grade 8	> Grade 8	> Grade 8
Thermal Resistace	EN 12664	0.080 m² K/W	0.080 m² K/W	0.080 m² K/W
Fungus Test	ASTM G21:96	Grade 1	Grade 1	Grade 1
Skew And Bow	EN 427	Max 3%	Max 3%	Max 3%
Slip Resistace	EN 12633	Class 2	Class 2	Class 2
Residual Indentation	EN 434:1994	0.08 mm	0.08 mm	0.08 mm
Dimensional Stability	EN 434:1994	0.05% (X+Y direction)	0.05% (X+Y direction)	0.05% (X+Y direction)
Curling	EN 434:1994	1.5 mm	1.5 mm	1.5 mm
Assessment Of Static Electrical Propensity I	SO1815:1997	1.2 kV	1.2 kV	1.2 kV
Acoustics Performance	ISO 140-9:1997	Lw = 12 db;Cl = -9db	Lw = 12 db;Cl = -9db	Lw = 12 db;Cl = -9db
Castor Chairs Suitability	EN 425:2002	No effect	No effect	No effect

# WOVEN INTEGRATION

COLOR SELECTION



WV 4006  
TRANQUILITY



WV 4007  
SPICE



WV 4008  
BOLD BEIGE



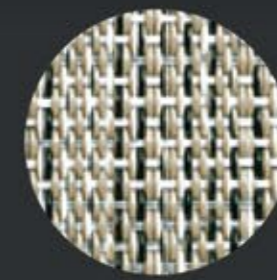
WV 4010  
REFLECTION



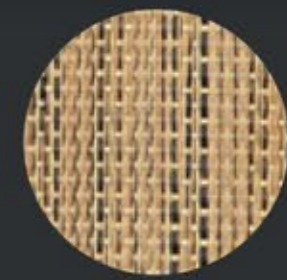
202  
Twill



205  
Twill



101  
LINEN



107  
LINEN



WV 1209-10  
MOOD



WV 4001  
WAVE



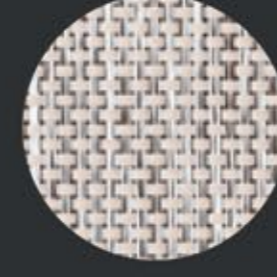
501  
BAMBOO



505  
BAMBOO



108  
LINEN



301  
RATTAN



302  
RATTAN



303  
RATTAN



T02



T03



T04



T05  
GRANITE



304  
RATTAN



305  
RATTAN



K01  
STREAKY



K02  
STREAKY



T06  
GRANITE



104  
LINEN



105  
LINEN



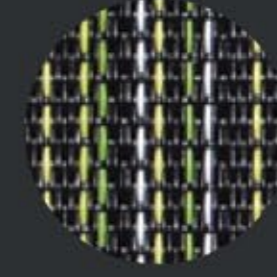
106  
LINEN



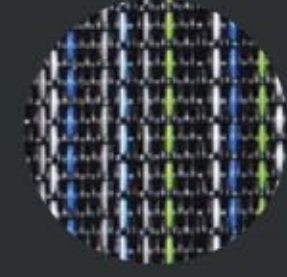
K03  
STREAKY



K04  
STREAKY



K05  
STREAKY



K06  
STREAKY



# WOVEN INTEGRATION

COLOR SELECTION



K07  
STREAKY



S11  
INFINITY



S12  
INFINITY



S13  
INFINITY



701  
SISAL



702  
SISAL



703  
SISAL



704  
SISAL



S14  
INFINITY



S15  
INFINITY



S16  
INFINITY



115  
STRIPE



705  
SISAL



706  
SISAL



707  
SISAL



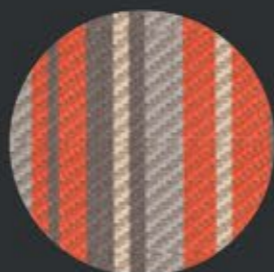
708  
SISAL



116  
STRIPE



117  
STRIPE



118  
STRIPE



119  
STRIPE



709  
SISAL



710  
SISAL



711  
SISAL



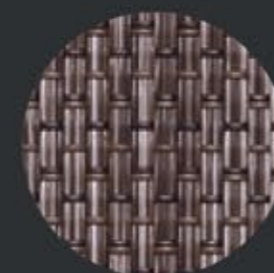
712  
SISAL



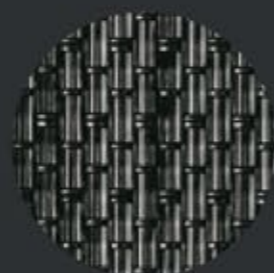
801  
PEYTON



802  
PEYTON



803  
PEYTON



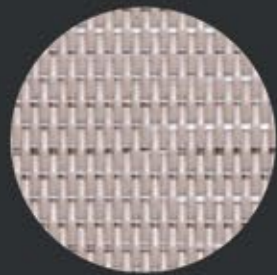
804  
PEYTON



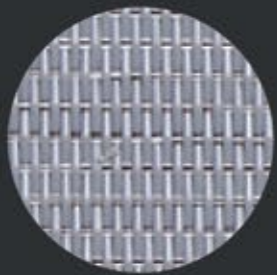
713  
SISAL



715  
SISAL



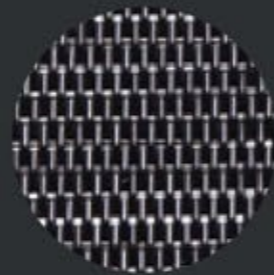
E11  
ELLIPSE



E12  
ELLIPSE



E13  
ELLIPSE



E14  
ELLIPSE



212  
Twill



213  
Twill



214  
Twill



215  
Twill



502  
BAMBOO



504  
BAMBOO



201  
Twill



203  
Twill



216  
Twill



217  
Twill



218  
Twill



219  
Twill



204  
Twill



205  
Twill



206  
Twill



207  
Twill



601  
HERRINGBONE



602  
HERRINGBONE



603  
HERRINGBONE



604  
HERRINGBONE



208  
Twill



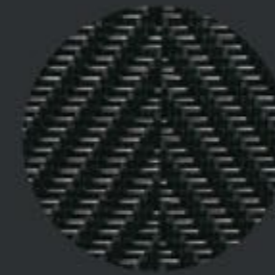
209  
Twill



210  
Twill



211  
Twill



605  
HERRINGBONE



T01  
GRANITE





Q01  
QUILT



Q02  
QUILT



Q03  
QUILT



Q04  
QUILT



WV 4002  
CALM BEIGE



WV 4018  
ECRU HEM



WV 4012  
DIVINE



SH 01  
SHADOWCRETE



Q05  
QUILT



WV 4017  
WHITE STICH



WV 4019  
GREY STICH



WV 1209-15  
WAVE



SH 06  
SHADOWCRETE



SH 07  
SHADOWCRETE



SH 11  
SHADOWCRETE



SH 12  
SHADOWCRETE



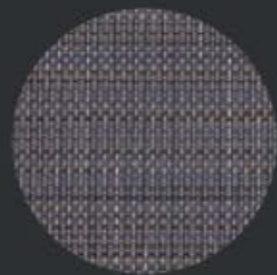
201  
Twill



WV 4004  
DIAMOND CUT GREY



WV 4009  
VITALITY



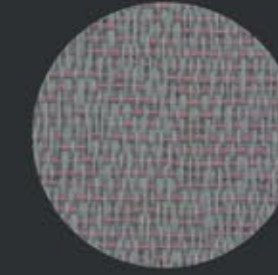
WV 4003  
WAVE



SH 02  
SHADOWCRETE



SH 03  
HERRINGBONE



SH 04  
HERRINGBONE



SH 05  
HERRINGBONE



WV 4005  
BOLD GREY



205  
Twill



WV 4005  
DIAMOND CUT RED



WV 4011  
ZEST



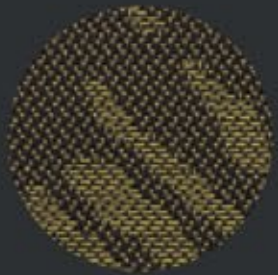
SA 1  
SANDSCRIPT



SA 2  
SANDSCRIP



REMIX CA4  
CHEVRON



REMIX CA5  
CHEVRON



REMIX CA6  
CHEVRON



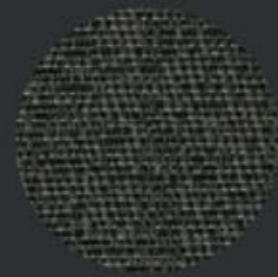
REMIX CA7  
CHEVRON



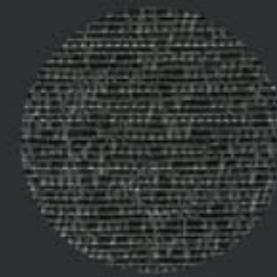
REMIX CA9  
CHEVRON



REMIX CB4  
CHEVRON



GA2



GA4



GB2  
GLIMMER



GB4  
GLIMMER



REMIX CC4  
CHEVRON



REMIX CD4  
CHEVRON



WA1  
WATERCOURSE



WA2  
WATERCOURSE



GC1  
GLIMMER



GC3  
GLIMMER



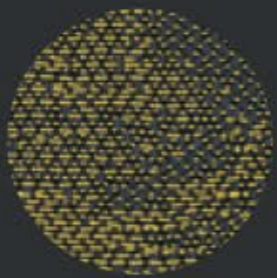
GC4  
GLIMMER



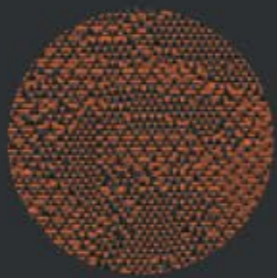
AD1  
ADOBE CRAFT



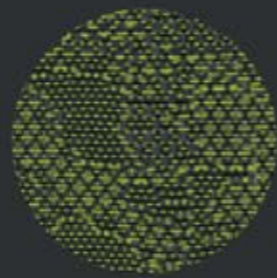
FA2  
FROST



FA5  
FROST



FA6  
VITALITY



FA7  
VITALITY



AD2  
ADOBE CRAFT



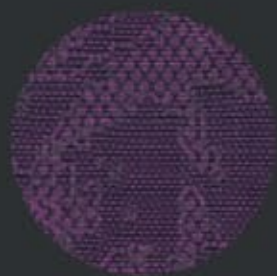
MA1



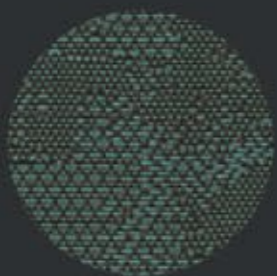
MA2  
MARBLERIDGE



MA3  
MARBLERIDGE



FA8  
VITALITY



FA9  
FROST



FA10  
FROST



FD2  
FROST



MA4  
MARBLERIDGE



MA5  
MARBLERIDGE





AR1  
ARTISANSTONE



AR2  
ARTISANSTONE



MO1  
MOONSCAPE



MO2  
MOONSCAPE



MY1  
MYSTICSHADE



MY2  
MYSTICSHADE

## LUXURY VINYL FLOORING





# LUXURY VINYL FLOORING

COLOR SELECTION

## TECHNICAL DATA (LVT CLICK VINYL)

CHARACTERISTICS	TEST	LVT CLICK
Classification	EN685	21-44
Dimensions	ISO24341	220 * 1220 mm
Straightness / Squareness	ISO24342	≤0.25mm
Thickness	ISO24346	5mm ± 0.15mm
Wear Layer Thickness	ISO24340	0.55mm ( + 13% / -10% )
Weight	EN430	9.3kg/m <sup>2</sup>
Abrasion Resistance	EN660 : part-1	Group T : ≤0.08mm
Residual Indentation	ISO24343-1	≤0.10mm
Chemical Resistance	EN438	Grade 5
Fire Resistance	EN13501 / ISO9239-1	Class Bfl S1(B1)
Dimensional Stability	ISO23999	≤0.12%
Color Fastness	ISO 105-B02:1994	≥Grade 6
Slip Resistance	AS4586 / DIN 51130	R10
Formaldehyde Emission	EN717-1	E1
Curving	ISO23999	≤1.2mm
Peel Resistance	ISO 24345	≥75N/5cm
Click Force	ISO 24334	≥120N/5cm
Anti-scratches	---	≥2500g
Acoustic Performance	EN ISO 717-2	ΔLw=10 dB
Cigarette burn resistance	EN438-2	Class 3
Castor Chair	ISO4918	After 25 000 cycles, no delamination shall occur. No disturbance to the surface other than a slight change in appearance

RECTANGULAR PLANKS (220MM x 1220MM x 5MM)  
(CLICK SYSTEM SERIES)



CL 5511  
SNOW WHITE



CL 5522  
VINTAGE OAK



CL 5533  
CREAM OAK



CL 5544  
PLATINUM GREY



CL 5555  
TIFFANY GREY

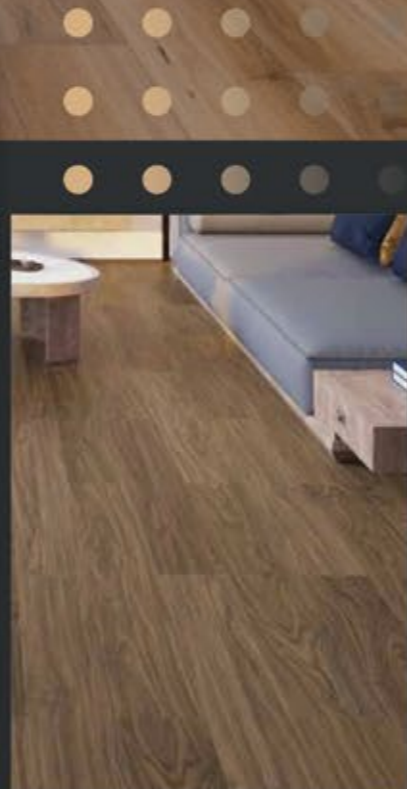


# RE-MASTERED ENGINEERED TIMBER (RMET)

ReMastered Engineered Timber (RMET) is a superior flooring product by U1 Floor Pte Ltd. It is a luxurious product used by our commercial clients- the luxury jewellery brand, Cartier International SNC, Singapore headquarters. RMET offers consumers numerous advantages in addition to being aesthetically pleasing. The advantages of RMET include its Floating System, 100% Termite-Free, Use of Zero Adhesive, Ease of Reinstatement, and its Quick Installation time.

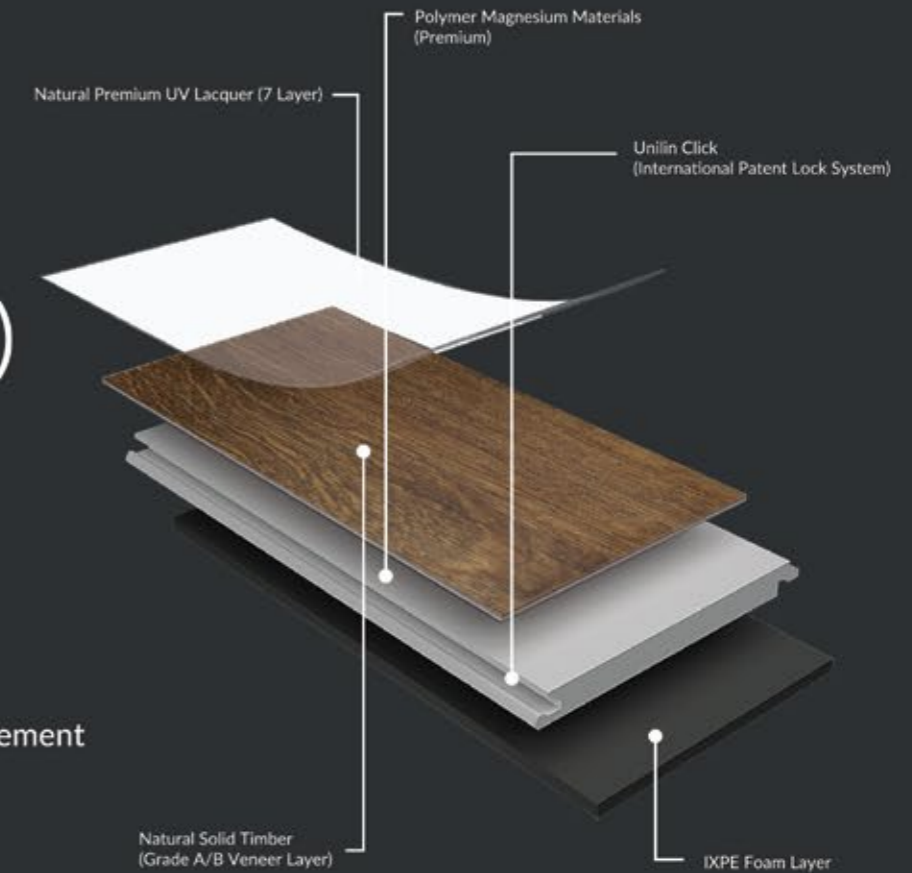
Since all RMET boards are constructed of natural materials, their colour, tone, texture, size, and thickness may all vary. Therefore, all variations are acceptable and will not be considered as a basis for defects as it contributes to the natural look of the plank.

Disclaimer: The colours that show on your screen may not be an exact depiction of the actual products due to differences in colour monitors. Kindly contact us to request for actual product samples.



## TECHNICAL DATA (RMET)

1. Core - Magnesium Oxide
2. 100% Waterproof
3. 100% Termite Free
4. Floating System
5. Zero Adhesive
6. Zero Nail
7. Installation (5x) Faster
8. Easy Replacement & Reinstatement
9. Cushion Backing
10. Premium Feel
11. Sound Reduction
12. High Density
13. 7 - Layers Premium UV Lacquered
14. Weight - 5x Heavier than Traditional Engineered Timber



CHARACTERISTICS	TEST	RE-MASTERED ENGINEERED TIMBER
Dimensions	---	165' / 170mm (W) x 1218mm (L)
Annex E	EN13329:2016 Annex E	>4000r
Resistance from Impact by Diameter Ball	EN13329:2006+A1:2008, Annex F	Pass
Micro-Scratch Resistance	EN16094:2012, Procedure B	MSR-B2
Castor Chair Test	EN425:2002	Pass
Residual Indentation	ISO 24343-1:2012	0.02mm
Resistance to Stains	EN438-2:2016, Section 26	Rating 5 (No Change)
Locking Strength	ISO 24334:2014	Long Side Joint : 2298N Short Side Joint : 352N
Dimensional Stability and Curling by Heat	ISO 23999:2008	Length Direction : 0.10% Width Direction : 0.00% Curling : 0.0mm
Dimensional Stability and Curling by Cool	ISO 23999:2008	Length Direction : 0.00% Width Direction : 0.00% Curling : 0.0mm
Surface Bonding	EN319:1993	Mean : 2.64 Mpa Wood Vener Tearing, No Peel between Base and Veneer
Swelling and Water Absorption	EN317:1993	Mean Swelling : 0.38% in Thickness Mean Water Absorption : 0.36% in Thickness
Film Hardness	ISO 15184:1998	3H
Thermal Conductivity and Thermal Resistance	EN12667:2001	Thermal Conductivity : 0.174W/m.K Thermal Resistance : 0.034 (m2.K) W
Soluble Elements in Analysis in Non-Surface Coating Materials	ASTM F963-17 Clause 4.3.5.2(2)b	Not Detected
Phthalate Content Test	ISO 8124-6:2018	Not Detected
Formaldehyde Content Test	EN1534	Not Detected



# RE-MASTERED ENGINEERED TIMBER (RMET)

COLOR SELECTION

## STANDARD PLANKS

Finishing Top Coat : 7 Layers of UV Lacquer / Oiled Stain  
 Veneer Grading : AB Grade  
 Veneer Thickness : 0.5mm / 1mm / 2mm  
 Backing : Cushioned Back / Premium Foam 2mm  
 Size : 7.5mm / 9mm / 10mm  
 Width : 165mm / 170mm



OAK (RAW) (V2)



WIRE-BRUSHED (V2)



PRE-FINISHED OAK (V2)



TEAK (V1)



WALNUT (V0.5)



OAK (HERRINGBONE)

### NOTE:

Ex-stock in Singapore, subjected to stock availability  
 All natural products being natural materials may vary in colour, tonality, texture, cuts (crown/quarter or mixed cuts).  
 Therefore such variations are at all times acceptable and could not be considered as basis or defects.  
 Picture is for illustration only, please request for sample.

# COMPOSITE DECKING

## CA DECK WITH UV COATING

SIZE : 142MM (W) X 22MM (T) X 2700MM (L)  
 Coverage Per Strip : 0.38m<sup>2</sup> / 4.13 sqft



CA TEAK (PREMIUM)



CA GREY (PREMIUM)



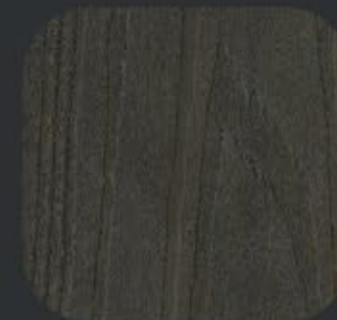
CA WALNUT (PREMIUM)

## CC DECK WITH UV COATING

SIZE : 138MM (W) X 23MM (T) X 2200MM (L)  
 Coverage Per Strip : 0.3036m<sup>2</sup> / 3.268 sqft



CC TEAK



CC WALNUT



## RU DECK

SIZE : 140MM (W) X 22MM (T) X 2200MM (L)  
 Coverage Per Strip : 0.308m<sup>2</sup> / 3.315 sqft



RU TEAK



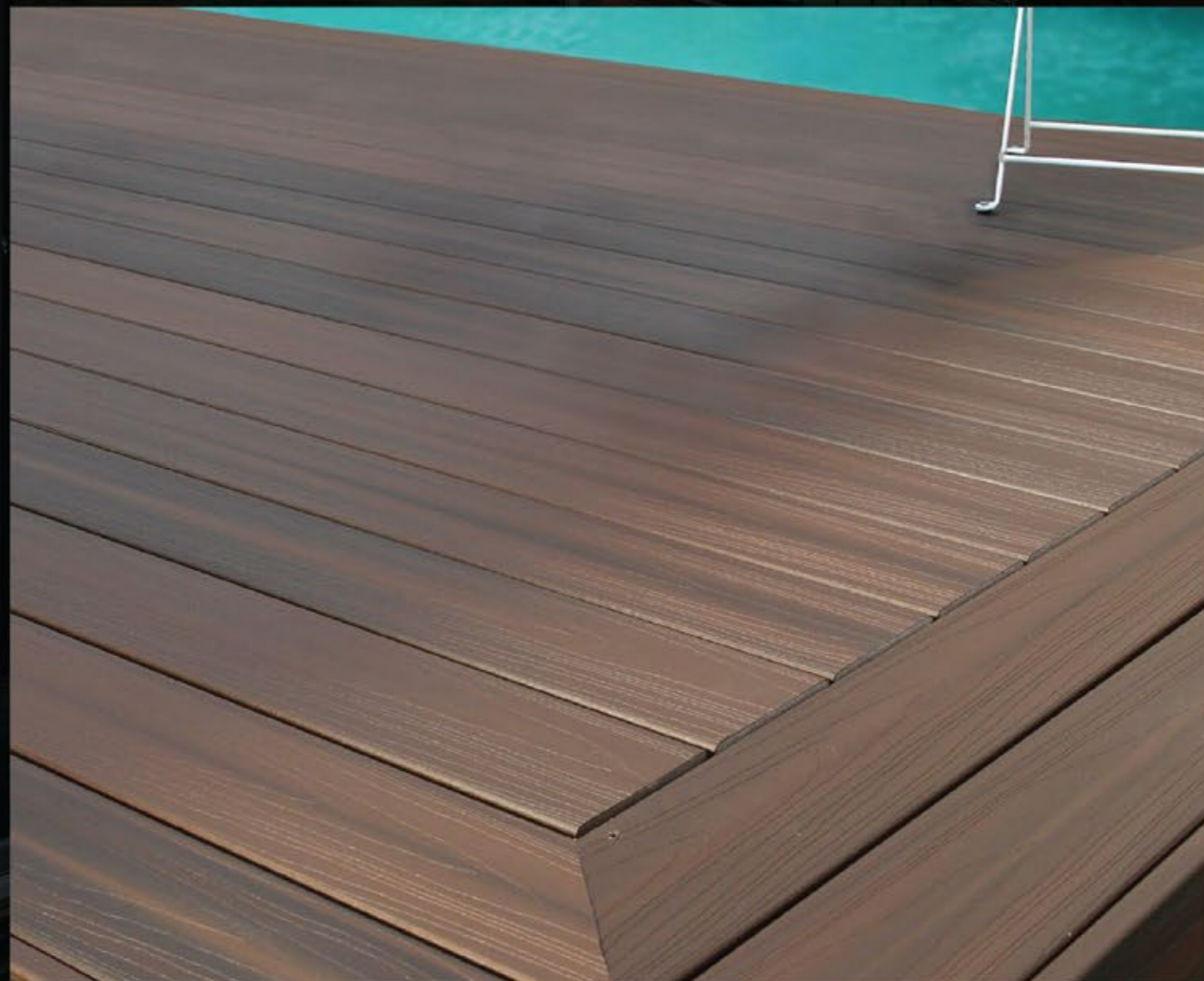
RU GREY



RU WALNUT

# OUTDOOR WOOD DECKING

PRODECK's Wood-Plastic Composite (WPC) decking boards remain a popular choice for outdoor decking. Their unique composition makes them highly resistant to UV rays, water, rotting and splinter-free which makes it very pet friendly. Grooved and Embossed decking are the two styles of boards offered. It also comes in 4 colours for each being: Teak, Walnut, Grey and Ebony. It is also easy to install as such being best fit for your decking needs in areas such as pools, balconies, roof terraces, patios. PRODECK's capped WPC plank is made by being co-extruded and has an advanced premium case surrounding its inner core. Because the shield and core are extruded together at extremely high temperatures and concurrently moulded, there are no harmful adhesives or chemicals used in the production of WPC boards, making it a great choice for your decking needs.



## DECKING ACCESSORIES

Plastic Clip: 5-6mm Spacing Gap



Plastic Clip (Front)



Plastic Clip (Back)

Stainless Steel Clip: 4-5mm Spacing Gap



Stainless Steel Clip (Front)



Stainless Steel Clip (Back)

### Terms & Conditions:

- Goods are subjected to availability. Please check in advance before placing order
- All sold goods are Non-refundable and Non-returnable
- There will be no discount for all accessories sold (even for Cash-On-Delivery payment)
- Prices are subjected to Goods and Services Tax (7%)
- Delivery Charges that are quoted are only applicable for day-time ground and lift level only